



**WORTHINGTON**  
INDUSTRIES

## Liquid Withdrawal Device

**For Liquid Nitrogen 25LD,  
35LD and 50LD Dewars**



The Liquid Withdrawal Device (LWD) provides convenient pressure transfers of liquid nitrogen from 25LD, 35LD and 50LD Dewars. The device clamps directly to the special neck flange that is found under the plastic trim collar around the neck of these containers.

Flow rates up to 8 liters per minutes are possible at operating pressures up to 10 psig (0.7 bar/69 kPa). Liquid can be dispensed directly from the LWD via the spout provided, or through a standard cryogenic hose connected to the liquid outlet.

Filling a Dewar is accomplished by pressure transfer through the withdrawal device. (See Filling Instructions.) This filling method allows replenishment of the liquid supply in the Dewar without removing the LWD, while keeping the liquid saturated at a pressure sufficient to sustain liquid withdrawal.

### **Safety**

**Before using this equipment, read these instructions carefully.** Also, read and understand the instructions supplied with your Dewar and the *Handle with Care* booklet packed with all Liquid Nitrogen Dewars. The *Handle with Care* booklet gives detailed information on the safe handling of liquid nitrogen. Additional copies of these publications can be obtained from your supplier. Do not modify LWD or Dewar or use in a manner other than that described in accompanying instructions and documentation.

**Contact with liquid nitrogen or cold gas may cause serious freezing (frostbite) injury.** Do not touch liquid or cold metal surfaces with your bare skin. Always wear a face shield and gloves when transferring liquid nitrogen.

**Nitrogen gas can cause suffocation without warning.** In a confined area, nitrogen gas from this equipment may displace air required for breathing. Store and use this equipment only in well-ventilated areas.

**Use only containers designed for low-temperature liquids.** Cryogenic containers should be filled SLOWLY to minimize stresses which can damage the container.

**Vent all pressure from a Dewar before attempting to remove the Liquid Withdrawal Device.** If the band clamp securing the LWD to a Dewar is loosened while there is pressure in the Dewar, cold gas or liquid could be expelled causing personal injury.

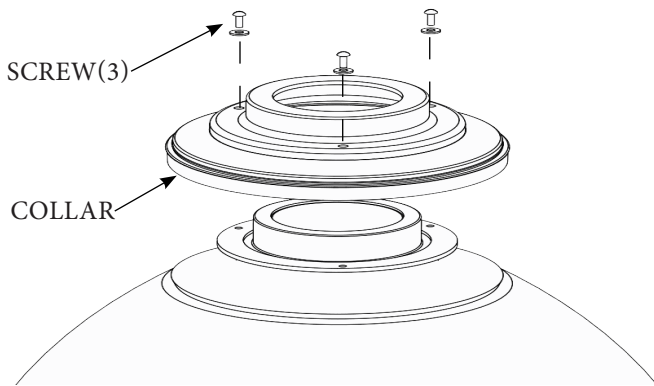
**Liquid Withdrawal Device is for use with liquid nitrogen only.** LWD is for use on specific model Worthington Dewars listed above.

**Pressure in Dewar with LWD installed should never exceed 10 psi.** Fill Dewar from supply source at 22 psi or less. Do not pressurize using compressed air.

# Liquid Withdrawal Device

## Installation

1. Remove the necktube cap/core from the Dewar
2. Remove 3 flat-head mounting screws in the base of the plastic trim collar around the neck of the Dewar, remove the collar and discard or save for later. It is not used while the LWD is installed.



3. The liquid withdrawal tube (the longer of the two plastic tubes) is scored approximately 6 in. (152 mm) from the end. This tube must be shortened for use with a 25LD or 35LD Dewar by breaking off the 6 in. (152 mm) section. Discard the 6 in. (152 mm) piece. The tube is used as supplied with the 50LD.
4. Insert the longer plastic tube into the underside of the flange assembly, beneath the LIQUID valve. Insert the shorter plastic tube into the threaded fitting on the underside of the flange assembly, beneath the VENT valve. Tighten the compression nuts with a wrench to secure.
5. Position the safety cable assembly around the top of the Dewar, underneath the flange. Loosen V-Band Clamp until the clamp is large enough to remove from the LWD. Drop the band clamp around the flange on the Dewar (see Figure 2).
6. Clean the flange O-ring and apply a thin layer of silicone grease before placing it on the grooved flange.
7. NOTE: Be sure flange surfaces are warm, clean and dry. The O-ring must be cleaned and lightly lubricated before installing the LWD.
8. Carefully lower the LWD unit into the Dewar. The LWD should rest firmly centered on the neck flange of the Dewar; the liquid withdrawal tube should not touch the bottom of the Dewar.

9. Place the band clamp around the flange of both the LWD unit and the Dewar. Be sure that the clamp is properly engaged on both flanges. Tighten the clamp — hand tighten only.
10. Attach the snap of the safety cable to the ring on the LWD (see figure 2).
11. If the spout assembly is to be used, install it on the outlet fitting above the LIQUID valve. The phase separator will ensure a controlled flow of liquid.

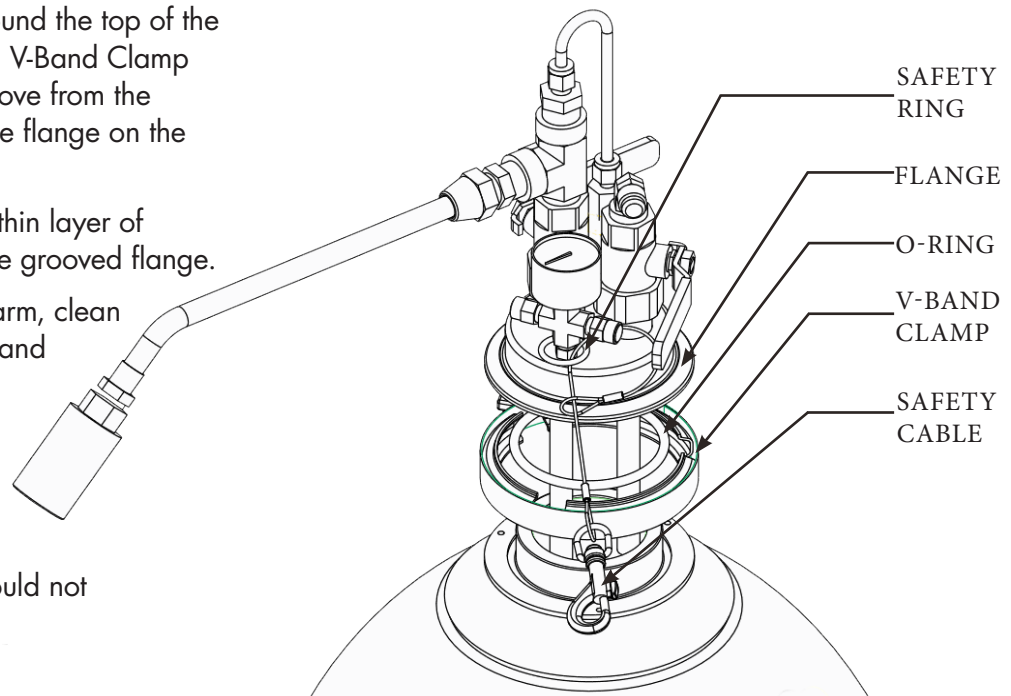
## Operation

**Filling** — It is not necessary to remove the LWD unit from the Dewar for filling. You may fill the Dewar by pressure-transfer of liquid nitrogen through the LIQUID valve of the LWD.

**WARNING:** Over pressurization of the Dewar could result in serious bodily injury or property damage. Never exceed the 10 psig (0.7 bar/69kPa) relief valve pressure setting of the LWD.

To fill, remove the spout assembly and connect a 22 psig (1.52 bar/152kPa) or lower pressure liquid supply cylinder to the withdrawal device using a liquid nitrogen transfer hose with female CGA 295 connections on both ends.

**WARNING:** The transfer hose must be used with a pressure relief valve to prevent excessive pressure build-up in the hose when the valves are closed at both ends of the



hose. If liquid nitrogen is trapped between the valves of the liquid cylinder and the LWD, it has no escape path as it warms and expands. The resulting pressure can cause the hose to rupture and may cause personal injury. The current model LWD is equipped with a pressure relief valve. Previous versions of the LWD must be used with a transfer hose equipped with a pressure relief valve.

Once the transfer hose is connected, open the LWD VENT valve first and then open the LWD LIQUID valve. Then slowly open the liquid valve on the supply cylinder until liquid flow is established. Adjust the VENT valve to maintain a back pressure of 8 to 10 psig (0.6 bar/55 kPa to 0.7 bar/69 kPa) in the Dewar. When liquid sputters from the VENT valve, quickly close the liquid valve on the supply cylinder, next the LWD LIQUID valve and then the LWD VENT valve.

**WARNING:** Closely monitor Dewar pressure throughout the fill process. Never let the pressure exceed 10 psig (0.7 bar/69 kPa). If the pressure approaches 10 psig, immediately fully open the LWD VENT valve and/or close the LWD LIQUID valve as necessary to control the pressure in the Dewar.

Loosen the hose connection slowly and allow all pressure and any remaining liquid to dissipate before completely disconnecting the hose.

The primary relief valve, set at 10 psig (0.7 bar/69 kPa), maintains the normal operating pressure of the LWD. A secondary relief valve, set at 15 psig (1.0 bar/103 kPa), prevents hazardous pressure rise in the event of primary relief valve malfunction or if its capacity is exceeded. Never replace either of these parts with higher value relief valves; increasing the pressure in the Dewar beyond 15 psig (1.0 bar/103 kPa) may burst the Dewar and cause personal injury/property damage.

To fill the Dewar by pouring liquid from another container, **(This is not the recommended filling method)** first open the VENT valve to release pressure. Then, loosen the band clamp, unsnap the safety cable, and remove the LWD unit. When replacing the LWD on the filled Dewar, leave the VENT valve open until the flanges are securely clamped. To pressurize the Dewar for liquid withdrawal, refer to "Pressure Building" below.

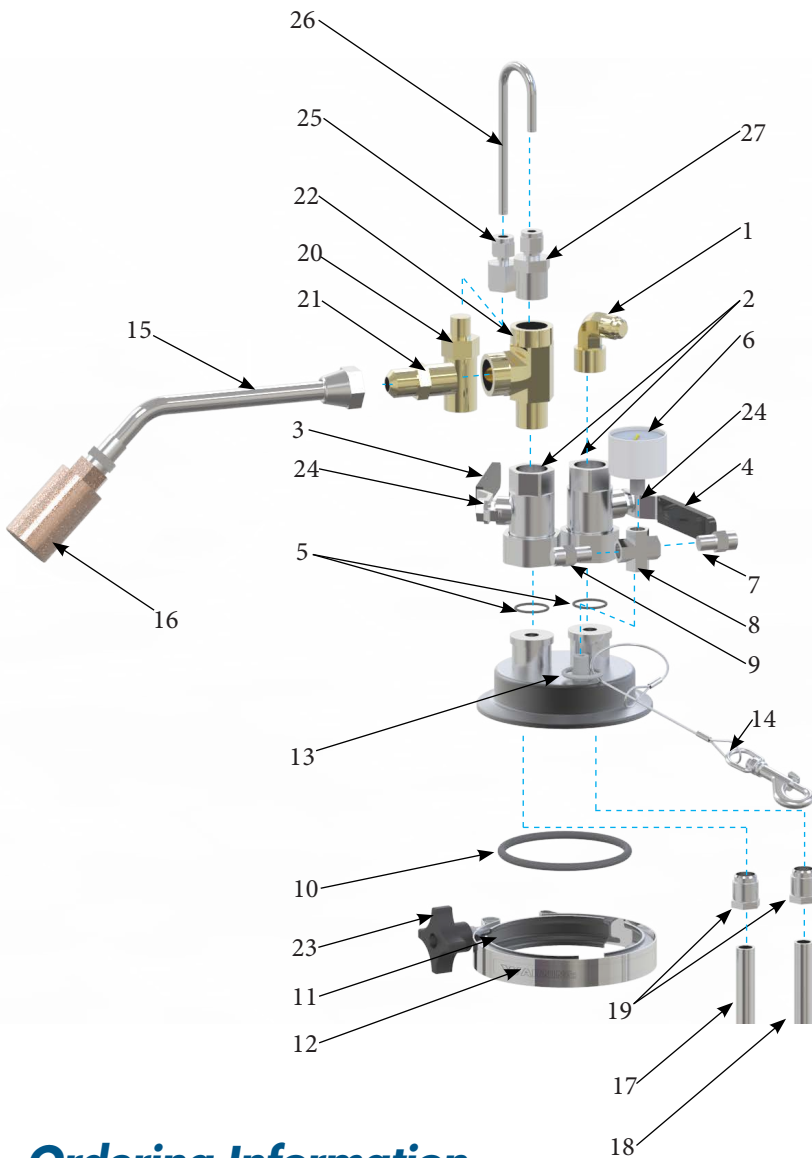
**Note:** Be sure flanges surfaces are warm, clean and dry. The O-ring must be cleaned and lightly lubricated before replacing the LWD.

**Liquid Withdrawal** — when the liquid valve is opened, pressure in the Dewar forces liquid to go up through the withdrawal tube and out through the valve. The liquid nitrogen can be dispensed through the spout or through the transfer hose connected to the liquid outlet.

**Pressure Building** — If the Dewar is filled properly, liquid nitrogen evaporation will normally maintain a pressure sufficient to sustain liquid withdrawal. However, if pressure is lost, bubbling dry nitrogen gas through the liquid will restore proper operating pressure. This adds heat to the liquid, causes evaporation, and increases pressure. Connect a pressure-regulated (8 to 10 psig 0.6 bar/55 kPa to 0.7 bar/69 kPa) source of dry nitrogen gas to the LIQUID connection. Open the LIQUID valve and adjust the VENT valve to maintain a back pressure of 8 to 10 psig (0.6 bar/55 kPa to 0.7 bar/69 kPa) while the gas bubbles up through the liquid. After several minutes, close the valves and read the pressure gauge. If the pressure does not remain above the 5 psig (0.3 bar/34 kPa), resume the gas flow until the liquid has warmed enough to provide normal operating pressure.

External pressurization can be applied while withdrawing liquid from the Dewar by connecting a supply of nitrogen gas, regulated to a pressure of 8 to 10 psig (0.6 bar/55 kPa to 0.7 bar/69 kPa), to the vent valve connection.

# Liquid Withdrawal Device



Item	Description	Part
1	Elbow, Vent	367262
2	Valve (Liquid/Vent)	367280
3	Valve Handle Cover, Liquid	366601
4	Valve Handle Cover, Vent	366602
5	O-Ring for valve	367376
6	Pressure Gauge 0-30 psig (0.2 bar/207 kPa)	367330
7	Relief Valve 10 psig (0.7 bar/69 kPa)	367272
8	Cross, 1/8" NPT	367270
9	Relief Valve 15 psig (1.0 bar/103 kPa)	367273
10	O-Ring for flange	367375
11	J-Band Coupling, w/ Warning Decal	366598
12	Warning Label	366604
13	Ring for Safety Cable	367377
14	Safety Cable Assembly	366603
15	Spout Assembly	366599
16	Phase Separator	367076
17	Tube, Liquid Withdrawal	366605
18	Tube, Vent	366606
19	Locknut, Compression	366608
20	Relief Valve 22 psig (2.4 bar/241 kPa)	367274
21	Connector, CGA 295 X 1/4" FTP	367317
22	Street Tee, 1/2" NPT	367268
23	V-Band Clamp Tightening Knob	367314
24	Valve Replacement Handle	367331
25	Connector, 1/4" ODT X 1/4" FTP	367173
26	Tube, Relief	367573
27	Connector, 1/4" ODT X 1/2" MPT	367172

## Ordering Information

Order all replacement parts and accessories from your distributor. Please include the part and model number of your dewar, quantity, and description of each part requested. For more information or the name of your local distributor, contact Worthington at the address listed.



## CONTACT US

**US Toll Free:** 844-273-7517

**Global:** +43 7485 606 286 / +1 614-438-7968

**Sales Support/Order Placement:**  
customerservice@worthingtonindustries.com

**Technical Services:**  
techservices@worthingtonindustries.com